

## Verify NC code

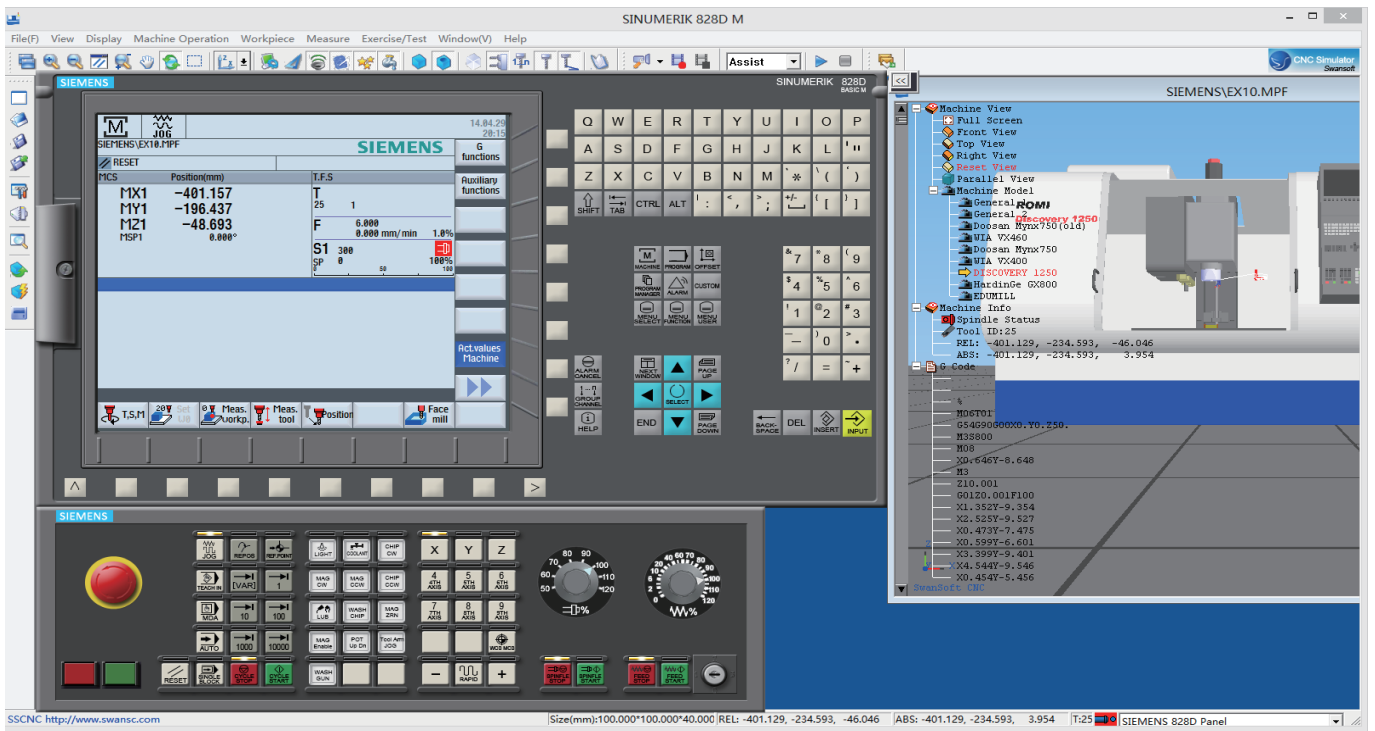
View tool trace and 3D  
virtual machining simulation



**SSCNC** is developed by Nanjing Swansoft Technology Company. It consists of FANUC, Simens (SINUMERIK), Mitsubishi(MITSUBISHI), HEIDENHAIN, Fagor, HAAS, ROMI, GSK(Guangzhou), HNC (HUAZHONG), KND(Beijing), DASEN (Dalian), RENHE(Jiangsu),WA(Nanjing), SKY2003N (Nanjing), PA8000, Deckel FP4, GREAT (Chengdou), Mazak lathe and milling and milling center. It is involved in machining experiences of machine company and training experiences of colleges. Using the software, students can operate real NC machine in more short time and colleges can reduce greatly the expensive equipment investment.

## SSCNC main function

- 3D Modeling based OPENGL, Dual Monitor Display.
- Dynamic rotation, zoom, move, full screen, switch views, etc.
- G Code parse. Support ISO-1056 prepare function code(G code), assistant function code(M code) and other instruction.
- 3.5/4/5 Axis Milling Simulation.
- Import workpiece from CAD file.
- G code debug Tool.
- Custom code and cycles in different NC system are supported in SSCNC.
- Simulate post process file produced by UG,Pro-E,MasterCAM in SSCNC.
- Windows MACRO recording and replay.
- Operation process (AVI) recording and replay.
- Workpiece setting and mounting.
- Automatically change tool machine, Four Position Turret, Eight Position Turret and Twelve Position Turret.
- Vertical and horizontal change tool system automatically switch.
- Tool preset by using benchmark method and manual method.
- Machining with coolant, sound and iron fragment effect.



## Who benefits from CNC

Since SSCNC mimics the controller and simulates a CNC machine in a highly realistic multimedia graphics, it is an ideal practice tool for :

- In house training centers of industries for training operators, setters and programmers.
- CNC/CAM laboratories of Engineering and Diploma colleges, ITI institutes.
- Any skill development training center offering CNC machine operation course.
- Tech centers of CNC machine tool companies to train their customers.

## Network Monitor for training

When the software is installed on a local network it provides the instructor with the capability of managing and monitoring students, classes and tests. Instructor can query students and control machine login, logoff and machine operations. Can show students screen information on instructor's PC, enables instructor to remotely assist students via remote view or to take control of a student's PC.

## Easy student management

Student can be registered with a unique username and password. Once the student logs in from any computer in a local network the instructor can centrally manage, monitor and tutor the student. Offers increased accountability over students learning process.

